



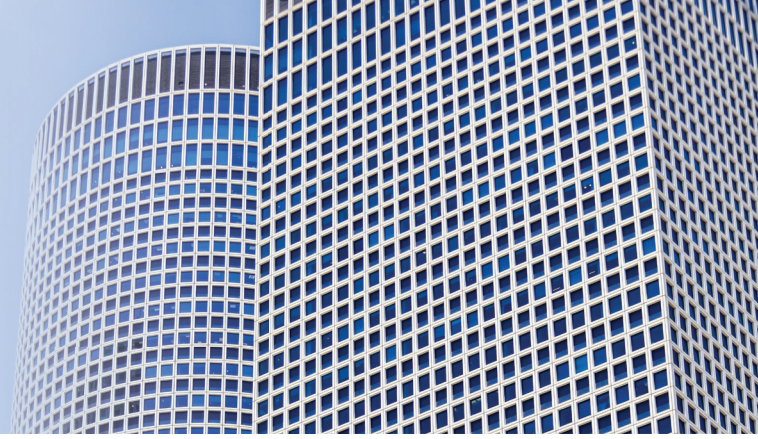
Marpai Labs and Technology

HOW ADVANCED TECHNOLOGY AD- VANCES THE HEALTH OF A COMPANY

MARPAI
LABS

Marpai is an AI technology with leadership in deep learning, the most advanced AI. At Marpai Labs, world leaders in deep learning are building predictive algorithms and other advanced technologies to reduce company health plan costs and create healthier members.

AI TECHNOLOGY TRANSFORMING HEALTH CARE



Marpai Labs is Marpai's dedicated R&D center where a team of top data scientists is building predictive algorithms and advanced technologies that can improve health and reduce health care spending. Marpai Labs has the world's first and only purpose-built, deep learning health state predictions framework, a \$50MM+ technology platform that keeps learning and growing. With it, Marpai is able to anticipate and predict health needs with unmatched speed and accuracy, so members can stay ahead of their health and mitigate developing health issues.



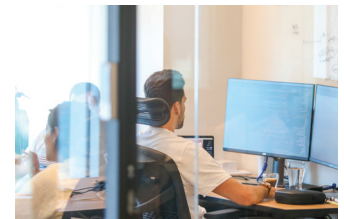
There is so much we can learn from health care data with deep learning. We can look into someone's health future, and take steps to change a person's health trajectory. This could be life saving.

Dr. Eli David, Marpai Co-founder & Chief Science Advisor



Visionary AI Insight and Expertise

Marpai is co-founded by Dr. Eli David (PhD), a leading deep learning expert, who has published over 50 papers, and has a successful track record in building deep learning-based companies. Through venturing into the depths of deep learning, his team has developed an artificial neural network brain that holds an instinctive ability to identify near-term health risks, so members can take actions to prevent costly illnesses and procedures. The Marpai Labs team is building a technology product that not only predicts future health states but can also eliminate errors and cost excesses in claims processing and empower proactive health by members.



DIVERSE DATA POWER

With Deep Learning, Marpai can process diverse data sources including, but not limited to, the following:

- Medical and Rx claims data
- Social determinants of health and psychographic data
- Blood tests and other laboratory results
- Pathology images
- Advanced images from X-rays, magnetic resonance imaging (MRI), and computed tomography (CT)
- Electronic health records
- Health risk assessments
- Personal health devices like SMART watches
- Connected health devices in the home

MARPAI
LABS

For more information speak with your Marpai representative or visit
www.MarpaiHealth.com